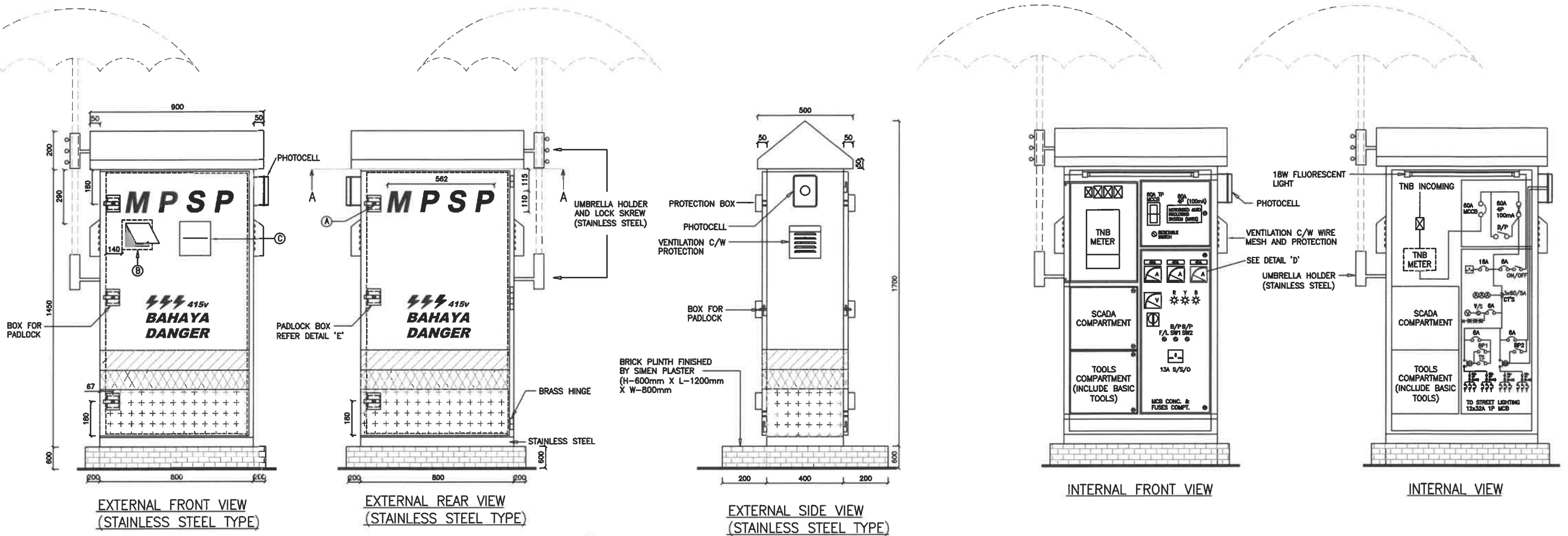


# LUKISAN PIAWAIAN FEEDER PILLAR LAMPU JALAN MPSP



**LEGEND**

- = COLOUR (CONFEROUS GREEN) MP 338-13041
- = COLOUR (GOLDEN YELLOW) P 396-456
- = COLOUR (RIVIERA BLUE 38)
- = 4.0mm THK PLATE

**MATERIAL USED:**  
 PANEL : 1.5mm THICK STAINLESS STEEL SHEET  
 COLOUR FINISHED : POWDER COATING MP7484T (GREY)

**NOTA:**  
 PEMOHON DIKEHENDAKI MENGEMUKAKAN CADANGAN LENGKAP SISTEM PEMANTAU DAN KAWALAN JARAK JAUH (SCADA SYSTEM) YANG PERLU DIPASANG. PEMOHON JUGA PERLU MEMASTIKAN SISTEM YANG DIPASANG MESTILAH BOLEH DIINTEGRASI/BERINTRAKSI DENGAN SISTEM SEDIA ADA.

- NOTE:**
- FRONT & REAR DOOR MUST BE STAINLESS STEEL (4 LAYERS) WITH STEEL FRAME
  - OUTDOOR TYPE BRASS HINGE (SCREW MUST BE MOUNTED FROM INSIDE PANEL)
  - ALL DIMENSION IS FOLLOW MPSP SPEC
  - MPSP LOGO MUST BE PROTECTED BY ONE LAYER ANTI STICK PAINT
  - THE FIRST LAYERS SHALL BE COATED WITH NON-STICK PAINT
  - ANTI STICK PAINT SHOULD INCLUDED WITH WARRANTY FOR 2 YEARS
  - ALL MATERIAL AND EQUIPMENT MUST BE LISTED UNDER JMAL / EMAL

