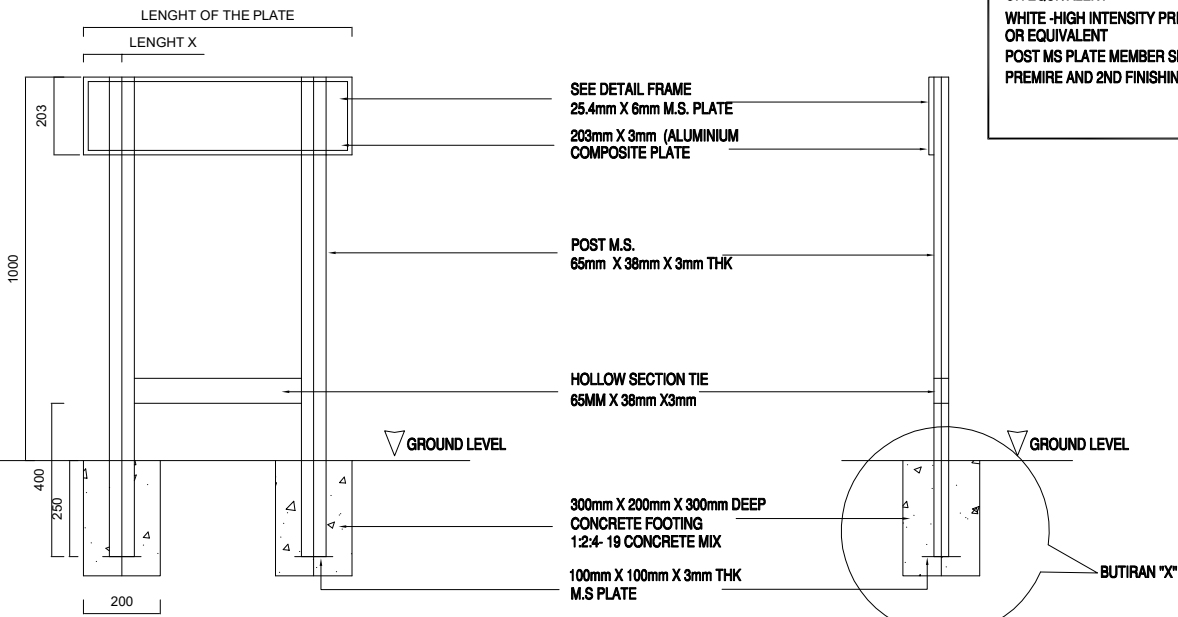
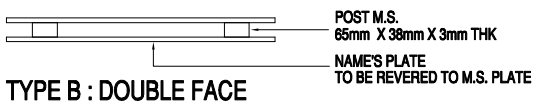
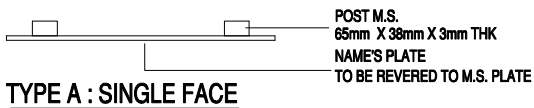


**NOTE:**  
 ORACAL 651 INTERMEDIATE (GLOSSY & MATT) - 040 VIOLET OR EQUIVALENT  
 WHITE - HIGH INTENSITY PRISMATIC (HIP) 3930. OR EQUIVALENT  
 POST MS PLATE MEMBER SHALL PAINTED WITH PREMIRE AND 2ND FINISHING SYNTHETIC RESIN PAINT

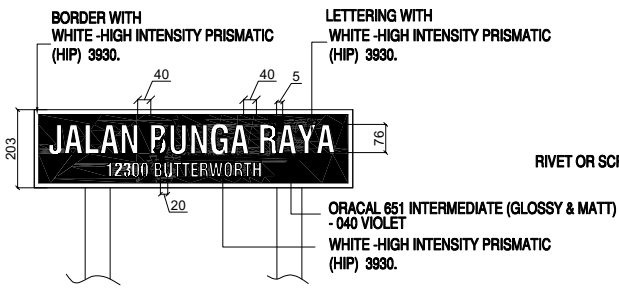
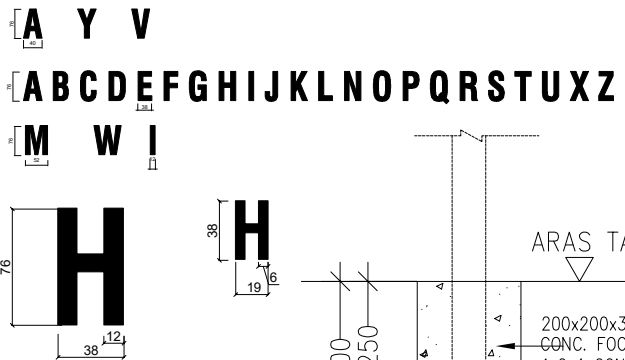


**FRONT ELEVATION**

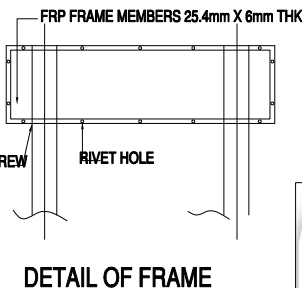
**SIDE ELEVATION**



**TOP ELEVATION**



**DETAIL OF PLATE**



**CONTOH GAMBAR PATIL NAMA JALAN MENGIKUT SPESIFIKASI MBSP BAGI SKIM SRATA ATAU PERSENDIRIAN. JALAN DI BAWAH PENYELENGGARAAN PIHAK JMB ATAU PERSENDIRIAN**

**\*\*NAMA JALAN DAN POSKOD BERBEZA BAGI SETIAP LOKASI\*\***

SIZE	LENGTH X	LENGTH OF THE PLATE
A	100	700 - 849
B	125	850 - 1049



LUKISAN PIAWAIAN JABATAN KEJURUTERAAN  
 MAJLIS BANDARAYA SEBERANG PERAI

Tajuk Lukisan: Butiran Patil Nama Jalan STRATA

MBSP/KEJ/LK/RD/10/Rev.0

Dilukis: Jabatan Kejuruteraan

Disemak: Pengarah  
 Jabatan Kejuruteraan

Skala Lukisan: Tiada Skala